

Barretta & Associates
Architecture
Planning
Design

658 Normandy Ln. Bldg. N
Delray Beach, FL 33484
561-740-0041

Archila
Design

GROUP
ARCHITECTURE
SERVICE
923 San Rafael Rd SW
Palm Bay, FL 32908
PHONE: (321) 932-6470

N. RIVERSIDE
3 UNIT TOWNHOUSE BLDG
554 N. RIVERSIDE DR.
POMPANO BEACH, FL. 33062

Revisions:

All ideas design arrangements and plans indicated or represented by this drawing are owned by, and the property of this office and were created, revised and developed for the use on and in connection with the specified project. None of such ideas design arrangements or plans shall be used by or disclosed to any person, firm or corporation for any purpose whatsoever without the written permission of BARRETTA & ASSOCIATES. Written dimensions on these drawings shall have precedence over scale dimensions. Contractors shall verify and be responsible for all dimensions and conditions on the job and this office must be notified of any variation from the dimensions and conditions shown by these drawings.
Barretta & Associates 2021

Seal

Digitally signed
by James T
Barretta
Date:
2021.08.13
12:37:23 -0400

JAMES T. BARRETTA

UNIT -A
FLOOR PLANS

Project No:
21-054

Scale: AS SHOWN

Drawn by: J.B.
Designed by: J.B.
Checked by: OSCAR
Date: 8/11/2021

Sheet No:

44.10

PZ21-12000019
10/20/2021

DOOR SCHEDULE									
NO.	WIDTH	HEIGHT	THK	QTY	BASE MAT'L	TYPE	FINISH	GLASS TYPE	REMARKS
1	8'-0"	8'-0"	1-3/4"	1	O.	REINF. MTL	FNT.	--	OVERHEAD GARAGE DOOR
2	2'-8"	8'-0"	1-3/4"	1	F.G.	FRONT DR.	FNT.	IR.	W/ THRESHOLD, 4 LOCK
3	8'-0"	8'-0"	1-3/8"	3	S.G.	ALUM.	FNT.	IR.	PRIVACY LATCH
4	2'-8"	8'-0"	1-3/4"	1	S.G.	WOOD	FNT.	--	20 MIN. FIRE RATED
5	2'-8"	8'-0"	1-3/4"	1	H.C.	WOOD	FNT.	--	PRIVACY LATCH
6	2'-6"	8'-0"	1-3/4"	2	H.C.	WOOD	FNT.	--	PRIVACY LATCH
7	8'-0"	8'-0"	1-3/8"	2	S.G.	ALUM.	FNT.	IR.	PRIVACY LATCH
8	12'-0"	8'-0"	1-3/8"	1	S.G.	ALUM.	FNT.	IR.	PRIVACY LATCH 3 LITE S.G.

NOTE: S.C. - SOLID CORE
H.C. - HOLLOW CORE
M.T. - METAL THRESHOLD
W.S. - WEATHER STRIPPING
STD/EXT. - STAINED EXTERIOR
AL. - ALUMINUM
FNT. - FANT
TEMP. - TEMPERED
F.G. - FIBER GLASS
F.T.G. - FIX TEMPER GLASS
ALL INTERIOR DOORS TO HAVE DIFFERENT HOLDING APPLICATIONS - SEE INT. DESIGN DRAWINGS, (I.D.D.)

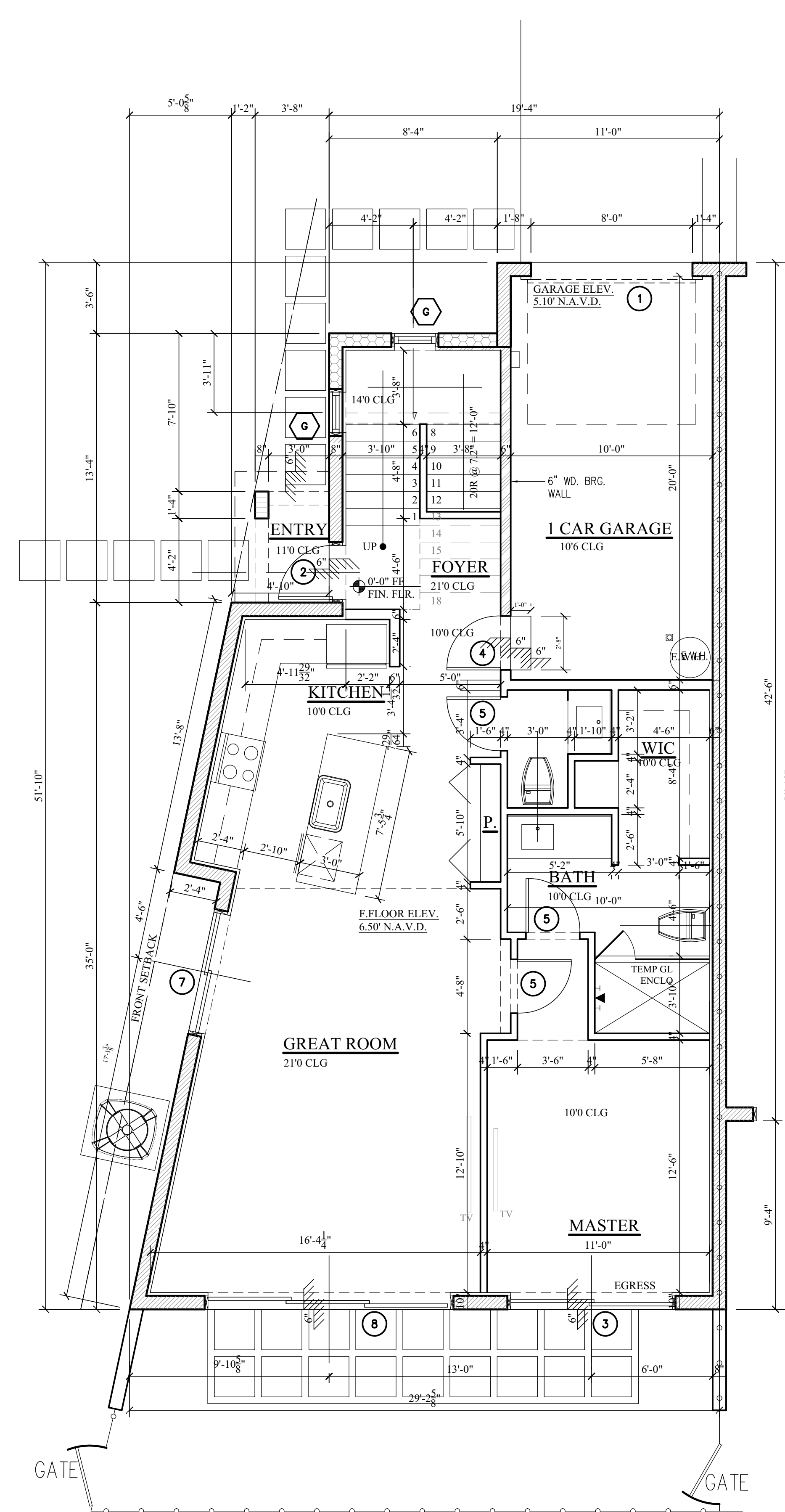
IR - IMPACT RESISTANT
FD - FRENCH DOOR
FD&SL - FRENCH DOOR W/SLIDE LITES
S.G. - SLIDING GLASS
B-F - BI-FOLD
O. - OVERHEAD-GARAGE
W.G. - WIRE GLASS
W.D. - WOOD
E.D. - ELEVATOR DOOR
N.I.G. - NON-IMPACT INSULATED GLASS
SLD. - SLIDING DOOR

WINDOW SCHEDULE							
LET.	SIZE	QTY	TYPE	HEAD HEIGHT (TOP OF WINDOW)	FRAME	GLASS	REMARKS
A							
B							
C	24'X24'	1	F.T.G.	8'-0"	VINYLT	IR.	
D							
E							
G	24'X14'	2	F.T.G.	11'-0"	VINYLT	IR.	
H	12'X36'	1	F.T.G.	8'-0"	VINYLT	IR.	
I	36'X36'	3	F.T.G.	8'-0"	VINYLT	IR.	

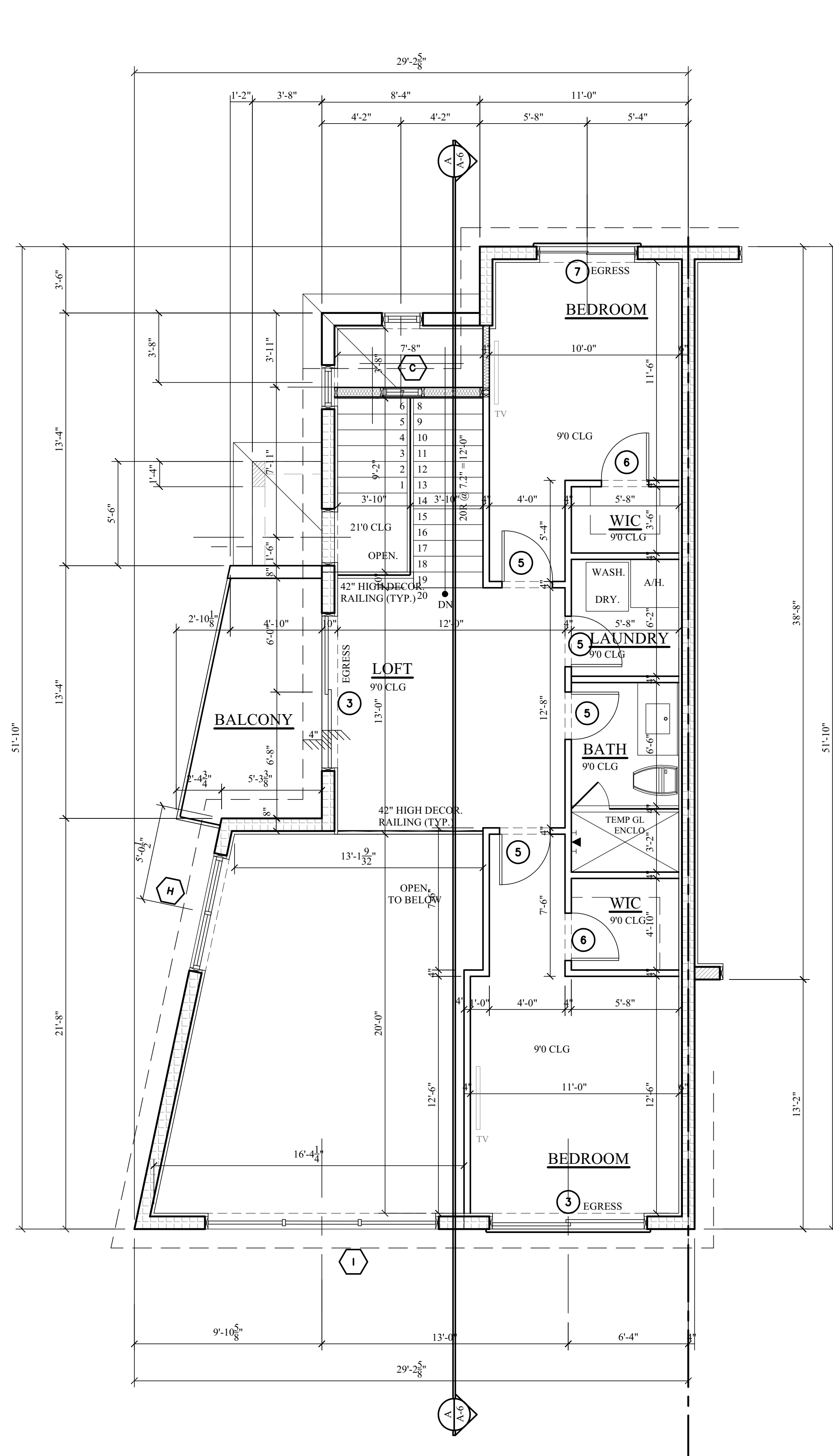
NOTE: 1. WINDOW DESIGNATIONS ARE GENERIC.
2. WINDOWS SHALL HAVE WHITE FRAMES AND BRONZE TINTED GLASS.
3. ALL GLAZING AT HAZARDOUS LOCATIONS SUCH AS SLIDING DOORS, FRENCH DOORS, DOOR SIDELIGHTS, TUB AND SHOWER ENCLOSURES AND WINDOWS ETC. SHALL BE TEMPERED.
4. WINDOW AND DOOR MANUFACTURERS SHALL VERIFY THAT ANY GLAZING USED IN EXTERIOR WALLS SHALL MEET WIND LOAD DESIGNS AS SPECIFIED IN THE GOVERNING LOCAL BUILDING CODE.
5. T.D.L. - TRUE DIVIDED LITE
6. V.I.F. - VERIFY IN FIELD
7. AFF. - ABOVE FINISH FLOOR OF 1st, 2nd OR 3rd FINISH FLOOR.
8. SEE EXTERIOR ELEVATIONS FOR ALL MARTIN WORK DESIGN ON WINDOWS.
9. F.T.G. FIXTURE TEMPERED GLASS

AREA CALCULATION:	
1ST FLOOR LIVING	1,005 SF.
2ND FLOOR LIVING	690 SF.
TOTAL LIVING AREA	1,695 SF.
GARAGE	216 SF.
COVERED ENTRY	20 SF.
BACONY	81 SF.
NEW TOTAL UNDER ROOF	2,012 SF.

WALL HEIGHT SCHEDULE	
NOTE: ALL HEIGHTS ARE ABOVE FIN FLR OF LIVING ROOM (0'-0")	
SEE FRAMING PLAN FOR ALL BOND BEAM SIZES AND LOCATIONS	
+10'-8" AFF =	1#5 VERTICAL IN CONC FILLED BLOCK CELL AT 4'-0" C/C MAX. SPACING
+11'-8" AFF =	1#5 VERTICAL IN CONC FILLED BLOCK CELL AT 3'-4" C/C MAX. SPACING
+14'-0" AFF =	1#5 VERTICAL IN CONC FILLED BLOCK CELL AT 3'-4" C/C MAX. SPACING
+21'-4" AFF =	1#5 VERTICAL IN CONC FILLED BLOCK CELL AT 3'-4" C/C MAX. SPACING



UNT-A 1st. FLOOR PLAN
SCALE: 1/4" = 1'-0"



UNT-A 2nd. FLOOR PLAN
SCALE: 1/4" = 1'-0"